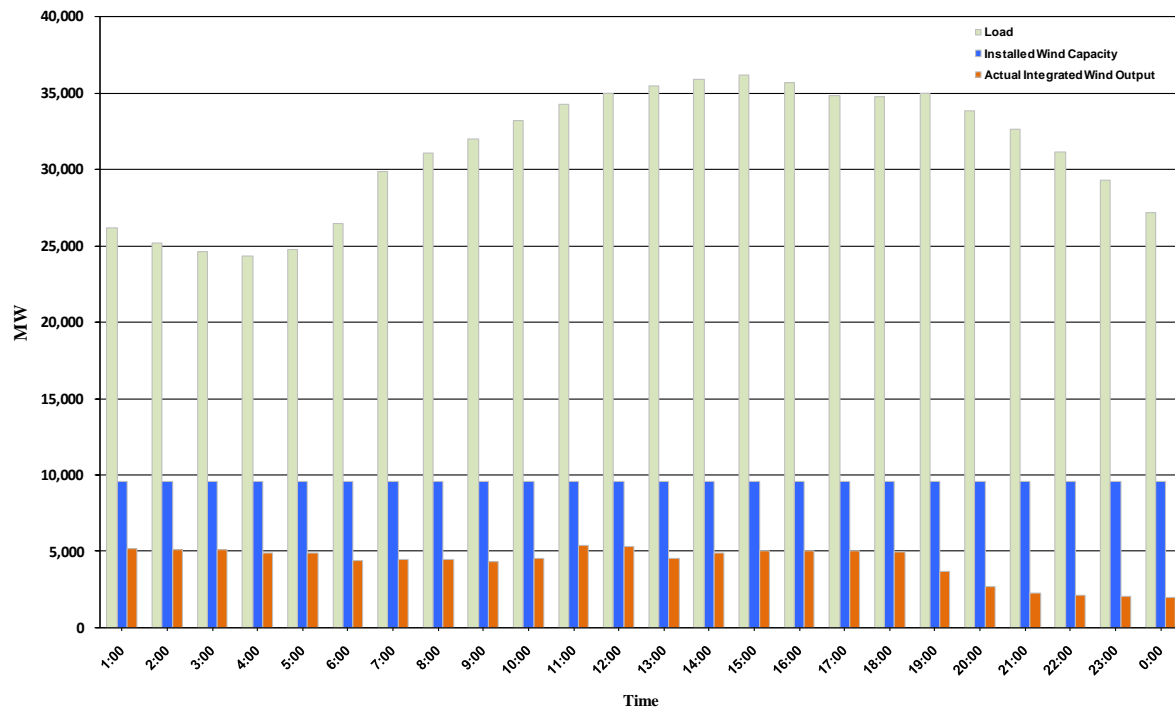




## ERCOT Grid Operations Wind Integration Report: 11/12/10

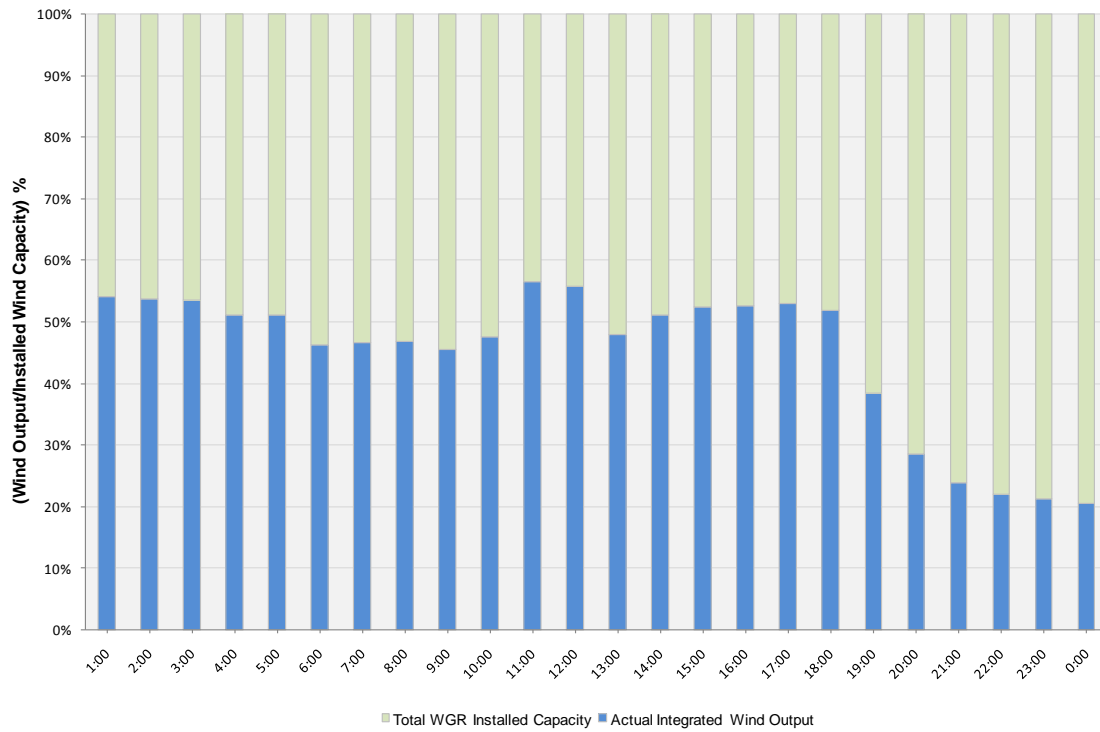
Peak Load	36,187 MW
Load Peak Hour	15
Wind Record 06/12/10	7016 MW
Max Wind value	5656 MW
Wind Peak Hour	10:22:08
Wind Integration %	16.55

Hourly Average Actual Load vs. Actual Wind Output  
11-12-2010

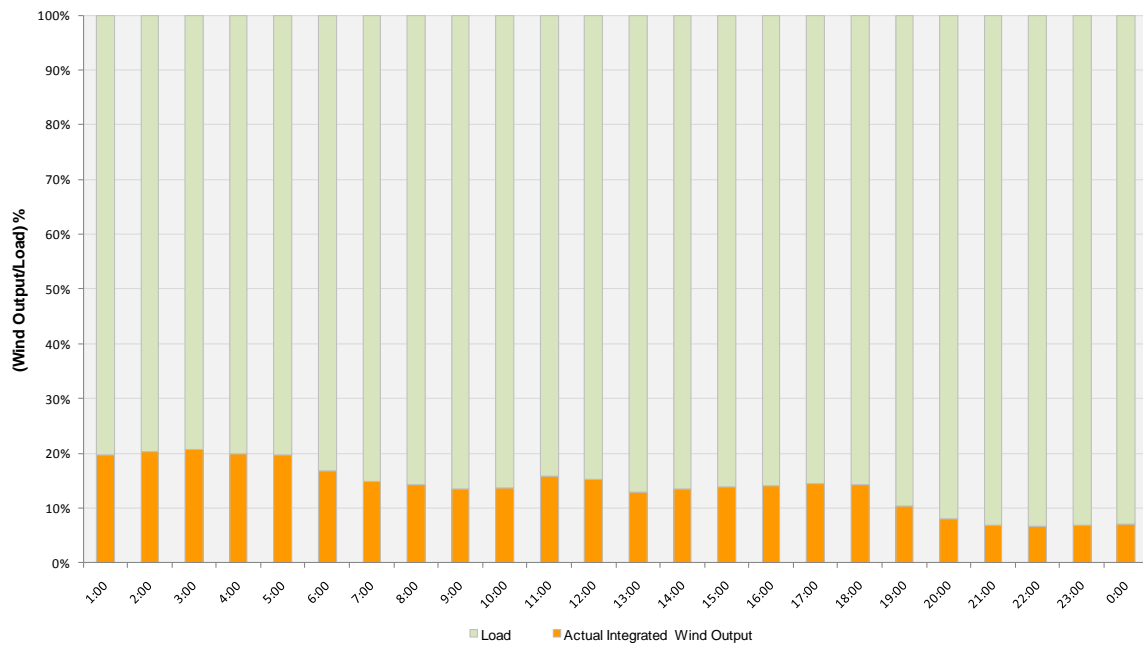




**Actual Wind Output as a Percentage of the Total Installed Wind Capacity**  
**11-12-2010**



**Actual Wind Output as a Percentage of the ERCOT Load**  
**11-12-2010**





ERCOT Load vs. Actual Wind Output 11/5/10 - 11/12/10

